

Historic, archived document

Do not assume content reflects current scientific knowledge, policies, or practices.



935

SEC. 562 P. L. & R.

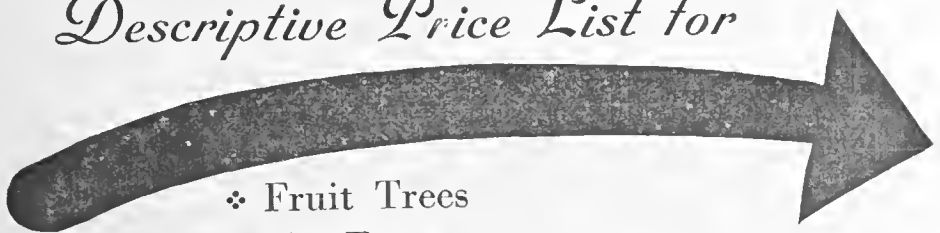


U. S. Department of Agriculture

FROM
LEONARD COATES NURSERIES, INC.

P. O. BOX 231
SAN JOSE, CALIFORNIA

Descriptive Price List for



- ❖ Fruit Trees
- ❖ Nut Trees
- ❖ Citrus Fruits
- ❖ Grape Vines
- ❖ Berry Plants



FRUIT TREES

For 59 years COATES "Super-Quality" fruit trees have been planted in Orchards that are today considered the finest producing on the Coast.

Our principle has always been to grow the very BEST fruit trees. Extra labor, time, and material have not been spared in an effort to produce a product that we could always feel proud to offer to the planting public. We still religiously hold to that principle today and that is why we offer you "Super-Quality" fruit trees; we feel we have something more than "Price".

DO NOT LET YOUR CONFIDENCE BE FOR SALE TO THE CHEAPEST BIDDER.

Why do we grow our fruit tree stock near Brentwood, in Contra Costa County? This is for your protection, because here is a section free from Peach Root Borer, and many other pests, and the climatic, soil and water conditions produce a vigorous root system that is essential to insure clean, healthy, well developed fruit trees.

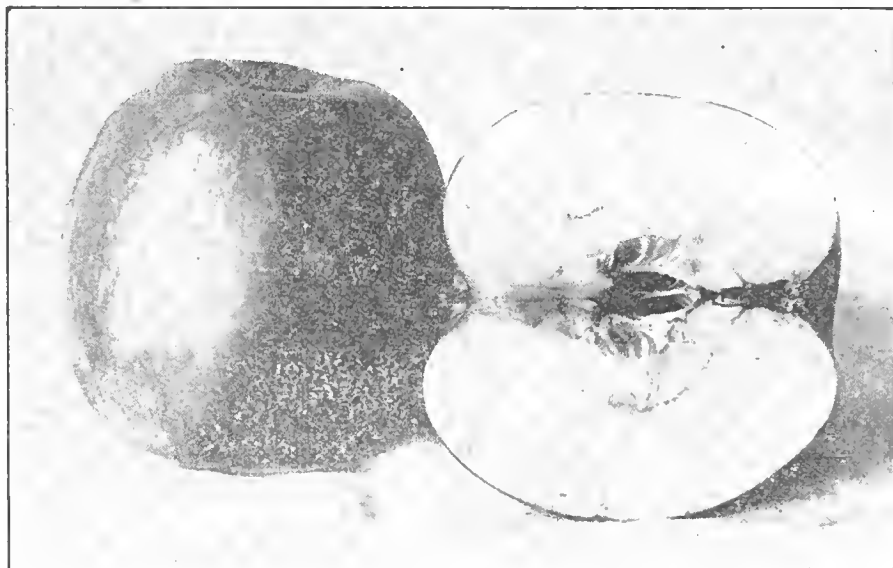
We offer you a large selection of varieties to choose from and by careful selection you can keep well supplied with fresh fruit for a large part of the year—an ideal arrangement for the Family Orchard.

PRUNES, ALMONDS on Peach, APRICOTS on Peach,
BLACK WALNUTS, FREESTONE PEACHES
NECTARINES, PLUMS

	1 to 10	11 to 49	50 to 299	300 and more
6 to 8 ft. (Caliper 1 1/16" up)	.60	.40	.35	.30
4 to 6 ft. (Caliper 1/2" to 1 1/16")	.50	.35	.30	.25
3 to 4 ft. (Caliper 3/8" to 1/2")	.40	.30	.25	.20

APRICOTS on Cot and Myrobolan, ALMONDS on Almond,
APPLES, CHERRIES, CLING PEACHES
PEARS, QUINCE AND FIGS

	1 to 10	11 to 49	50 to 299	300 and more
6 to 8 ft. (Caliper 1 1/16" up)	.60	.45	.40	.35
4 to 6 ft. Caliper 1/2" to 1 1/16")	.50	.40	.35	.30
3 to 4 ft. (Caliper 3/8" to 1/2")	.45	.35	.30	.25



ROME BEAUTY APPLE

NOTHERN SPY. Large, roundish, pale yellow, purplish red stripes in the sun; flesh white, mild.

RED JUNE. Medium size, oval, deep red; flesh white, tender, sub-acid; early.

RED DELICIOUS. One of the finest eating apples; crisp, juicy and full of flavor. Excellent for shipping and home use. Skin nearly all red. One of the most widely planted apples on the Coast.

RED PEARMAIN. Fruit rather large, skin shaded and striped with red, flesh crisp and juicy. A fine variety for eating fresh or cooking.

RHODE ISLAND GREENING. Fruit large, greenish yellow, of good quality, and has a high bearing record.

ROME BEAUTY. A large firm apple, good for shipping. Skin is yellow striped with brilliant red; flesh is fine grained and juicy. A good keeper. Ripens in November.

SKINNER SEEDLING. Originated in Santa Clara Valley. Large, rich, lemon yellow, faintly striped with red; flesh yellowish white; quality best; early.

SPITZENBURGH. Large, oblong, yellow striped with red; flesh yellow, rather firm, crisp and juicy with a delicious rich flavor.

STAYMAN WINESAP. Fruit large and round; skin yellow covered with dark red, flesh greenish yellow, firm and quite acid in flavor; ripens in December.

WHITE ASTRACHAN. A superb cooking apple. Fruit large, skin greenish white. Does well in interior valleys.

WHITE WINTER PEARMAIN. Large roundish, pale yellow with purplish red stripes in the sun. Flesh yellow, tender, crisp and juicy. Tree a strong grower and does well in nearly all parts of the State.

WINTER BANANA. Medium to large, golden yellow, shaded red. sub-acid; an early bearer.

YELLOW NEWTON PIPPIN. Large, roundish, yellow with brownish red cheek; flesh firm, crisp, juicy, and with very rich, high flavor; best winter apple.

YELLOW BELLFLOWER. Very large, conical, golden yellow, tinged with red, sub-acid, keeps well in winter; very popular.

YELLOW TRANSPARENT. A very good summer apple, one of the first to ripen; yellow skin, medium size, good flavor, and cooks well.

Coates "Super-Quality" APPLES

In the coastal regions and in the higher mountain plateaus commercial apple culture occupies a prominent place in California fruit growing; in a small way certain varieties for local consumption and home use can be grown in all parts of the state. While this fruit will do quite well in a variety of soils and varying situations, it does best in deep sandy loam soils.

ALEXANDER early. Very large, showy, greenish yellow, streaked with red in shade, bright red in sun; flesh yellowish white, crisp, tender and juicy.

ARKANSAS BLACK. Dark red fruit, flesh firm, of good quality, medium size. A very fine keeper and excellent shipper. Produces a prolific crop and tree is vigorous grower.

ASTRACHAN, RED. Large, roundish, skin deep red, greenish yellow in the shade; flesh white, juicy and crisp; tree hardy, early bearer. One of the best early apples.

BALDWIN. Large, narrowing at one end; deep bright red over a yellow ground; flesh yellowish white, crisp, juicy, good quality. Recommended in northern and elevated regions.

BLACK BEN DAVIS. Fruit large and of good quality. Tree good bearer and strong grower.

DELICIOUS. Yellow; large; almost covered with dark red, juicy and fine grained. Late, good keeper.

EARLY HARVEST. Medium size, roundish, straw color with faint white dots; flesh white, tender.

GRAVENSTEIN. Large, somewhat flattened, broadest at base. Yellow, freely marked with red; flesh tender, aromatic. A strong grower and heavy producer. Very popular. Best early variety.

JONATHAN. Medium to large, roundish; light yellow, nearly covered with red stripes and deep red in the sun; tender, juicy, rich, vinous; especially recommended for market; keeps till mid-winter.

KING DAVID. Large, deep red, suffusing rich yellow and delicious flavor; largely planted for Fall trade.

CRAB APPLES

HYSLOP. Large fruit, dark red, growing in clusters. Flesh yellowish.

TRANSCENDENT. Fruit is large, flattened at the end, skin yellow with red cheeks, flesh crisp and sub-acid. Tree large and spreading with drooping branches. Ripens in September.

YELLOW SIBERIAN. Forms a beautiful large spreading tree. Fruit is rather small, borne in clusters, good quality and a heavy bearer. Fine for cooking and preserving.

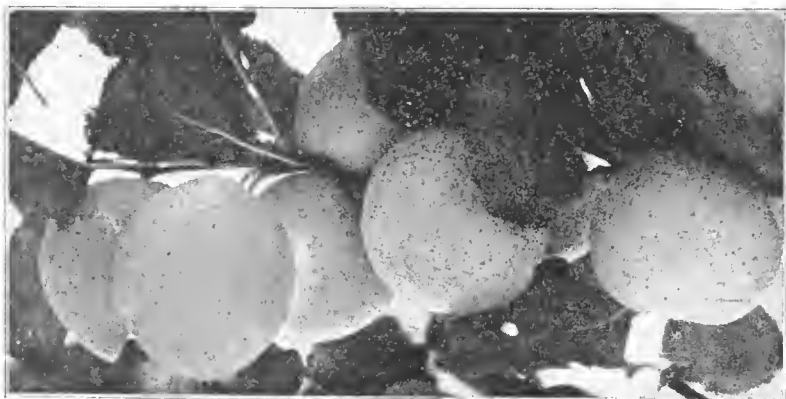
Coates "Super-Quality" APRICOTS

A fruit in which California leads the world in commercial production, and of which Santa Clara County is the largest grower in the State. Our stock and assortment is unusually fine this season, and we hope our old patrons will take advantage of it.

On Apricot, Peach and Myroblan Root.

BLLENHEIM. One of the most popular varieties in most parts of California for both canning and drying. Fruit a little larger than Royal, but must be well thinned as it is a prolific bearer.

EARLY NEWCASTLE. One of the earliest of all Apricots. Fruit of medium size, with good color, and good quality. Very good for shipping and especially so in districts where it ripens much earlier than the Royal.



LOSSE BLENHEIM APRICOT

LOSSE BLENHEIM. We handle the Losse strain of Blenheim, which we considered the best commercial strain in existence. Fruit is of large size, excellent quality and noted for being a very heavy producer; it is also considered the most popular variety in most parts of California for both canning and drying.

HEMSKIRKE. A fine, large, richly colored variety, ripening a little after the Blenheim. Flavor similar to Moorpark, but ripens more evenly.

MOORPARK. This originated in England over 200 years ago. It is our largest and finest variety, but a shy bearer, and sometimes ripens unevenly. A splendid home variety.

PEACH. Flesh fine yellow, saffron color, juicy, rich and highly flavored. Does particularly well in warm parts of the State.

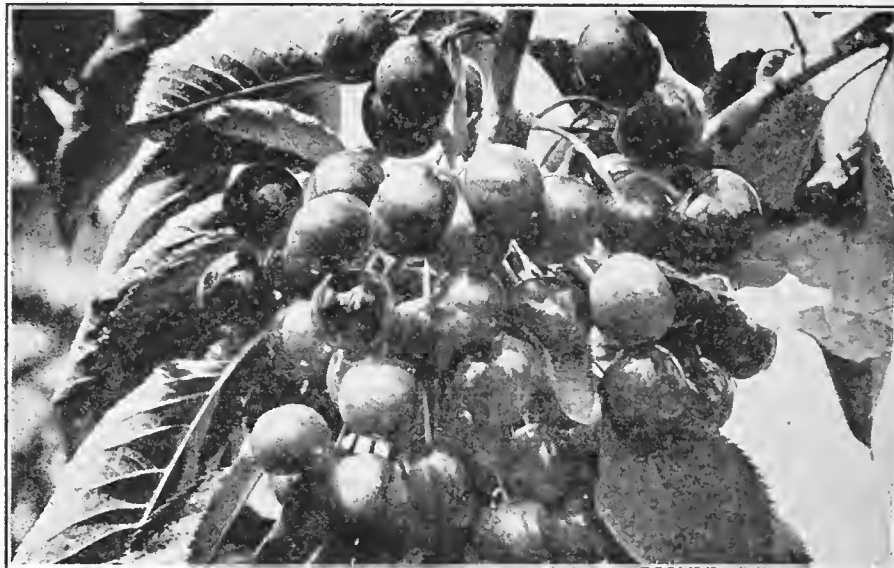
TILTON. Fruit large, symmetrical, ripening evenly and one week to ten days later than Royal. A favorite in the San Joaquin Valley. Its color increases its value on the fresh fruit market.

Coates "Super-Quality" CHERRIES

The cherry is adverse to extremes of temperature—it likes a situation where extremes are avoided. This will explain the somewhat limited areas in which this fruit is grown in commercial quantities. The central counties tempered by the sea air are recognized for their fine cherry orchards.

On Mazzard and Mahaleb root.

BLACK REPUBLICAN. (Black Oregon, Lewelling). Medium to large, firm, black cherry, ripening a little later than other black cherries. It prolongs the season; good shipper; prolific, sub-acid flavor. June.



BING CHERRY

BING. Very large; almost black; exceedingly firm; fine shipper; late. Middle June.

BLACK TARTARIAN. Very large black; good quality. Very productive. Ripens medium early. Standard early shipping variety. June.

BURBANK. Large, early, black; one of the best early cherries. Very heavy foliage, birds do not get at the fruit. Very thrifty, suffers very little from die-back.

CHAPMAN. Introduced and named by Leonard Coates. Season very early. Quality, shipping and market. Fruit heart shaped; skin purplish black and thin; flesh deep pink, dark colored juice, meaty and of a sweet acidulous flavor. Tree large, spreading and productive.

LAMBERT. Fruit large; color deep rich red; flesh firm and of fine flavor; fine for shipping. Season July.

NAPOLEON BIGARREAU. (Royal Anne of the Market). Very large, pale yellow, becoming amber in shade, richly dotted and spotted with deep red, and with a bright red cheek; flesh very firm; juicy and sweet; grows in spreading form, does not sunburn; bears well. July.

TANGSII. A very early cherry introduced from China by the Federal Department of Agriculture. The fruit is red skinned, sweet and juicy; and ripens a month before any other variety. Tree is a vigorous grower with extremely large foliage; fine as an ornamental tree as well as for its fruit.

THOMPSON SEEDLING. Seedling of Black Tartarian and a great improvement on that popular variety. Introduced by us.

SOUR CHERRIES

MAY DUKE. A good canning Cherry; fruit large and red. Sweetest of the Sour Cherry type.

MONTMORENCY. Considered the best Sour Cherry. Fruit medium to large, bright red, fine acid flavor, ideal for pies. For commercial use or the home it is equally popular, attractive looking and ships well.

EARLY RICHMOND. Early; black or dark red; small, tart. Very productive and valuable for cooking. May.

Coates "Super-Quality" FIGS

A very popular home orchard fruit, and also grown extensively for commercial purposes. Trees need very little pruning and no spraying.

BROWN TURKEY. This is just about the best Fig for general uses in California, as it does well wherever Figs can be grown. Fruits are very large, with a rich purple-brown color, and the flesh a mellow strawberry-like taste, and very fine grained.

KADOTA. Fruit medium size, light green color. Pulp very sweet and good quality.

MISSION. The oldest and best all-purpose fig which was introduced by the Mission Fathers. Fruit medium to large, dark purple and excellent quality.

Coates "Super-Quality"
NECTARINES

This fruit should be more largely grown in family orchards than it is. Eaten in the fresh state as a dessert fruit it is simply delicious; it can be dried and canned. The trees bear quite as well as the peach, and do well in a wide variety of soils and situations.

BOSTON. Large; orange-red; deep yellow flesh. Middle July-August.

DIAMOND JUBILEE. From New Zealand. Fruit large, bright red with white flesh. Fine flavor and heavy bearer. Especially recommended. Ripens August first.

GOLD MINE. An introduction from New Zealand. Season, early August. Fruit large, freestone; flesh white, juicy, sweet and of good grain.

GOWER. Very early, large, skin pale green overspread with red, flesh white, sweet and juicy.

QUETTA. A variety which originated in India and was introduced into this country by the Federal Department of Agriculture. The fruit is unusually large with firm, fine textured flesh. The skin is light yellow striped and mottled with red. The flesh is white shaded with red near the pit; juicy and rapidly becoming the most popular nectarine for shipping.

SPENSER. An early variety of medium size, skin is white shaded red, flesh is white, juicy and of delicious flavor.

STANWICK. Very hardy; large, pale green flesh, tender, juicy; good quality. August and September.

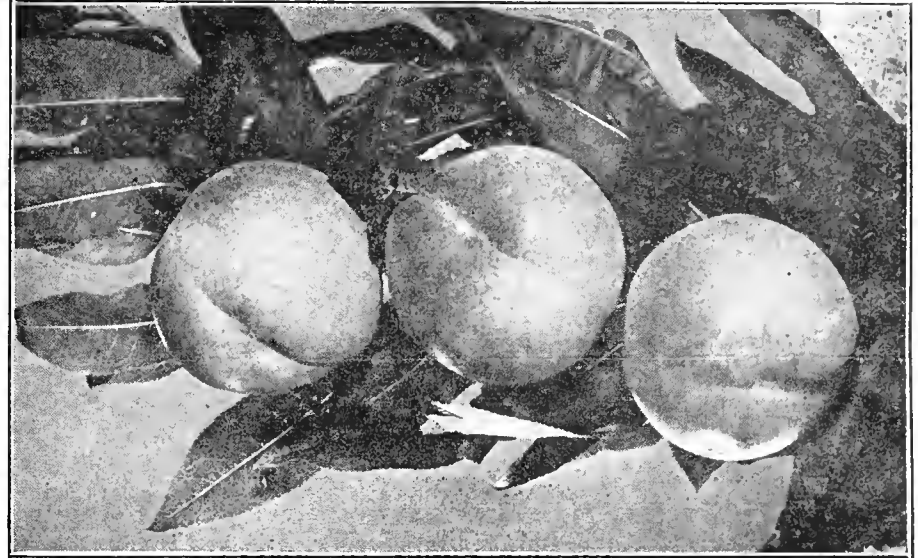
MUIR. Large; firm; rich and sweet. Pit small and free. Splendid for canning, shipping and drying. August.

OPULENT. A red cheeked, white fleshed peach introduced by Luther Burbank. Sweet and juicy, a very fine table peach.

PATTISON. A very early yellow fleshed peach of excellent quality. Medium size, very red skin, a fine peach for local markets.

PEREGRINE. Very handsome; red cheeked, white flesh; of excellent quality. August.

SALWAY. Large, roundish yellow flesh, red at the pit. Ripens late in September.



SHANGHAI PEACH (NEW)

Coates "Super-Quality"
PEACHES

One of our leading fruit crops, California being the nation's leading source of supply for canning and drying peaches. The tree does best in a deep, sandy loam soil, dry rather than overwet, but must be well drained.

By careful selection of varieties, it is possible in California to have the finest table Peaches almost continuously for six months out of the year.

The tree must be well pruned every year; at least half of all new lateral growth should be cut off.

ALEXANDER. Very early; greenish white flesh; firm; juicy; sweet. Good shipper. Trees productive and bear young. June-July.

BRIGGS RED MAY. Medium to large, round, white skin with rich, red cheek; a standard early variety. June-July.

EARLY CRAWFORD. Large; flesh yellow; sweet; rich flavor. Skin yellow with red cheek. Very productive, July.

FAY ELBERTA. Similar to Elberta with small pit and ripens a few days earlier. A yellow freestone. Cheeks more highly colored than Elberta, which makes it very attractive looking.

DECKER. White flesh with red cheek, fine eating. Good table or shipping peach.

ELBERTA. Very large, yellow, red cheek, fine grained flesh; very good for table, canning, drying or shipping. August.

FOSTER. Large, deep orange color; flesh yellow, rich juicy, first quality. Good producer. August.

HALES EARLY. A large round peach, which ripens in July. Flesh is white, juicy, sweet and delicious.

IDEAL. A high quality peach and ships well. an attractive yellow freestone.

J. H. HALE. One of the finest peaches both for home use and shipping. Very large, round, smooth skinned, almost fuzzless. Flesh is yellow, fine grained and of fine flavor. Ripens about the same time as the Elberta.

KRUMMEL. A very late freestone of excellent quality. Fruit is large, round and firm, skin clear yellow with red shadings; flesh yellow clear through, solid, juicy and sweet. Ripens in October.

LATE CRAWFORD. Fruit large and roundish; skin yellow with dark red cheek; flesh yellow, juicy and of fine flavor. August.

LOVELL. Large, almost round; firm; flesh pale yellow. Excellent for table, canning or drying. August.

LYMAN LATE. A large, high-colored freestone ripening in October after Krummel. Firm and well flavored, originated in Napa Valley.

MAYFLOWER. Earliest variety; skin red; flesh white; excellent quality; medium size; tree hardy. June.

SHANGHAI. (NEW) This magnificent new variety from the Orient has created a sensation among the few Orchardists that have had the good fortune to secure these trees. We have had this Peach under observation for several years and it was only after it had lived up to the severe tests we gave it, and even surpassed our expectations, that we decided to put it on the market. Flesh white and juicy, with a rich, sweet, mellow flavor. Fruit large, yellow, with dark red blush. The tree is a tremendously fast grower producing an enormous crop of uniform fruit. As we do not have a large quantity of trees to offer this season, orders will be filled in rotation as received.

	1 to 10	11 to 50
Price each 4 to 6 ft.....	1.10	1.00
3 to 4 ft.....	1.00	.90

STRAWBERRY. Medium size; skin marbled red; flesh white, rich, juicy. Good grower. August.

TRIUMPH. Very early, yellow flesh, skin yellow mottled with red. A regular heavy bearer of very good quality.

VAINQUER. A new variety which ripens about same time as Mayflower. Fruit medium sized, somewhat oblong, skin light yellow streaked and splashed with red, flesh is white, flavor sweet and pleasant.

YELLOW ST. JOHN. A handsome large early yellow fleshed peach. Orange yellow with deep red cheek; juicy, sweet and highly flavored.

CLING PEACHES

GUAME. One of the leading mid-summer canning varieties. Fruit large size, clear yellow flesh, small pit. Tree a vigorous grower and productive.

HALFORD. An exceedingly popular new variety due to its high productivity and fine quality of fruit. One of the best commercial varieties to plant. Ripens in late August.

PALORO CLING. Fine canning peach; large, round; flesh clear yellow, fine flavor. August.

PEAKS CLING. Highly valued as mid-summer canning peach. Flesh clear yellow to pit; small pit; skin slightly colored. August.

PHILLIPS CLING. Large; high colored; clear yellow to pit, which is very small. Especially fine for canning. Grows best on moist soil. September.

SIMS. Fruit large, clear yellow, excellent for commercial canning. Tree a vigorous grower producing abundant crops.

TUSCAN. Fruit very attractive and of good size, flesh yellow, with red near the pit, with very pleasing flavor. A good shipping variety and also recommended for home canning.

WHITE HEATH. An excellent white flesh cling. Fruit is beautifully blushed, fragrant, large, very fine grained, sweet, of exquisite flavor. For the home canning Peach this variety is unexcelled.

Coates "Super-Quality"
PEARS

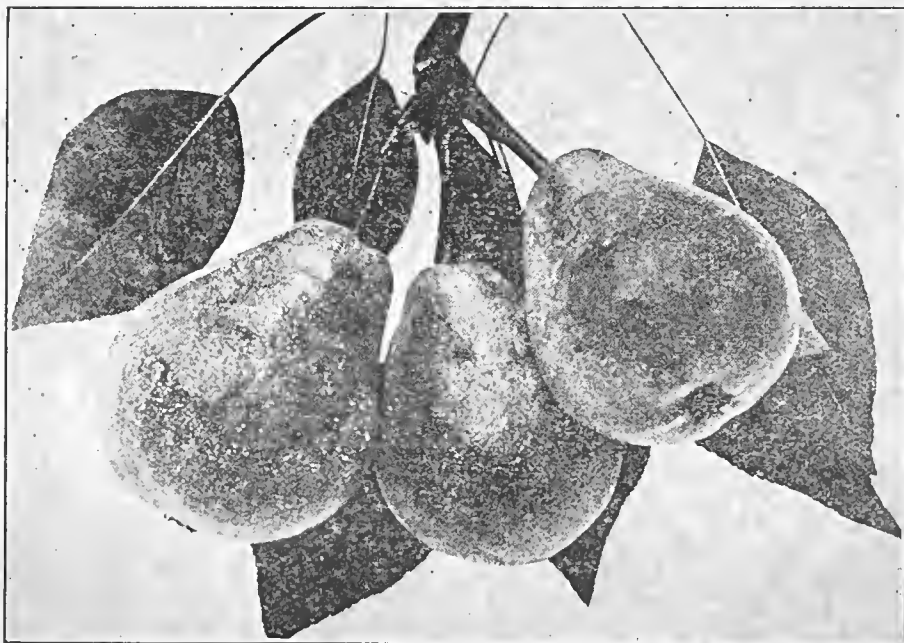
Of wide culture throughout the state, doing exceptionally well in the northern and central coastal regions; some of the finest pear orchards in the world are situated in this valley. Of Bartlett Pears California produces a larger tonnage than all the other states of the Union combined. The pear prefers a heavy loam soil, but does well in nearly all soils and is tolerant of considerable alkali.

On French Pear Root.

BARTLETT. California's most popular commercial pear. Season July and August; quality canning, drying, market and shipping. Fruit large and regular in shape; skin yellow with rose blush on sunny side; flesh fine grained, white, juicy and of good flavor. Tree tall and upright with stocky branches. Also double worked on Quince 10c higher.

BEURRE BOSC. Good market and shipping variety. Fruit large and regular in shape; skin bright yellow with rose blush; flesh white, buttery and of good pear flavor. Tree of medium size with stocky branches.

BEURRE CLAIRGEAU. Fruit very large, yellow flesh shaded red, with a sweet mellow flavor. A very good keeper and shipper.



SECKEL PEAR

BEURRE D'ANJOU. Fruit prized due to its keeping qualities in storage and marketed over a long period. Has gained in commercial rank in California.

BEURRE HARDY. (Also on Quince Root.) Fruit of medium size with tapering neck; skin yellow, pink on sunny side; flesh white, tender and sweet. Tree upright, large and vigorous.

DANAS HOVEY. (Winter Seckel.) A winter variety having all the fine qualities of the summer Seckel. Fruit unexcelled in sweetness, fine flavor and eating qualities and the tree a good bearer.

DOYENNE du COMICE. Fruit large and pyriform; skin yellow shaded with russett; flesh melting, sweet, slightly aromatic. A good market variety.

DUCHESS D'ANGOULEME. A very large, greenish-yellow fruit, sprinkled with russett, with a most delicious flavor.

EASTER BEURRE. A good shipping and market pear; also for home use and storage. Fruit large, roundish; skin yellowish-green; flesh white, juicy and sweet. Tree vigorous; valuable as a pollenizer with other varieties. October.

GLOUT MORCEAU. A good quality fine grained Pear; size medium to large. Does well in Santa Clara Valley.

P. BARRY. Fruit yellow, very large, flesh juicy, vinous and melting. Very productive and tree a strong grower. An excellent keeper.

SECKEL. Rather small, regularly formed, with russett red cheeks, very juicy with peculiarly rich, spicy flavor.

WINTER BARTLETT. Fruit small, resembling the standard Bartlett in shape; skin yellow with rose blush on sunny side; flesh of good grain, flavor and juicy and of good keeping qualities. Tree productive and of good habit. December.

WINTER NELIS. Fruit medium and roundish in shape; skin brown dotted with gray russet; flesh cream colored, good grain and aromatic flavor. Tree dwarf in habit but productive. Fruit ripens in November.

Coates "Super-Quality"
PLUMS

Plums are grown successfully throughout the state, and invariably yield good crops. The varieties possessing commercial rank are those that are desirable for canning, preserving and shipping. Many varieties, however, are also to be recommended for home plantings.

On Peach and Myrobolan Roots.

APEX. (Plumcot). Burbank's. Best known of the plumcots but smaller than Stanford Plumcot. Plum-like in skin and flesh, but having a distinct cot flavor. One of the earliest fruits. June.

BEAUTY. (Japanese). An important early variety. Size medium to large, with beautiful crimson color. Flesh good flavor, and firm enough to ship well.

BURBANK. Rich cherry red, mottled with yellow; flesh deep yellow; juicy; very sweet; bears early. Japanese type.

CLIMAX. Very large; deep red; round pointed; extremely showy and high flavor. Valuable and popular shipper of Japanese type.

ELDORADO. Fruit round and blue; flesh firm, light yellow, sweet with a small pit. One of the best eating Plums and considered the finest canning Plum on the market today. The tree is an exceptionally heavy bearer.

FELLEBGURG (Italian Prune). Fruit of medium size, oval, tapering at both ends, dark purple; rich and delicious flesh with greenish-yellow color, and a good drying variety.

GERMAN. Long, oval with purple skin. Flesh firm, green, sweet with peculiarly pleasant flavor.

GREEN GAGE. Almost round; deep green skin, mottled with red spots; flesh green; best quality. Domestic type. One of the leading canning plums; very popular for many years. August.

HUNGARIAN. Very large; deep crimson; oval; juicy and rich. Also known as Gross Prune. Domestic. August.

JEFFERSON. Best yellow canning plum; very large and of rich flavor; round. Can be dried. September.

KELSEY. Large; yellow and purple; round pointed; good quality; sweet before ripe. Very popular shipper for many years and becoming more so in the south. Popular with Chinese and Japanese. Japanese type. September.

KING OF DAMSONS. Fruit oval, skin thin, purplish black, overspread with thick bloom, flesh greenish yellow, juicy and agreeably tart.

METHLEY. (Same as Early Satsuma). Fruit much like the Satsuma only the ripening period is much earlier, its season being the latter part of June.

PRESIDENT. Very large; oval; dark purple; yellow flesh, firm; fine quality. Follows Grand Duke and similar in appearance. Hangs a month or more on trees in good condition. Good shipper. A very remarkable plum. Introduced by Leonard Coates. September.

SANTA ROSA. Large, round, bright red; flesh reddish; very good. The best of Japanese type; for home use and for shipping. July.

SATSUMA. Japanese blood plum; large, round; flesh claret red, very good for preserves; good shipper. August.

STANFORD. (Plumcot). Largest and finest flavored Plumcot, being a cross between Normand Plum and Royal Apricot.

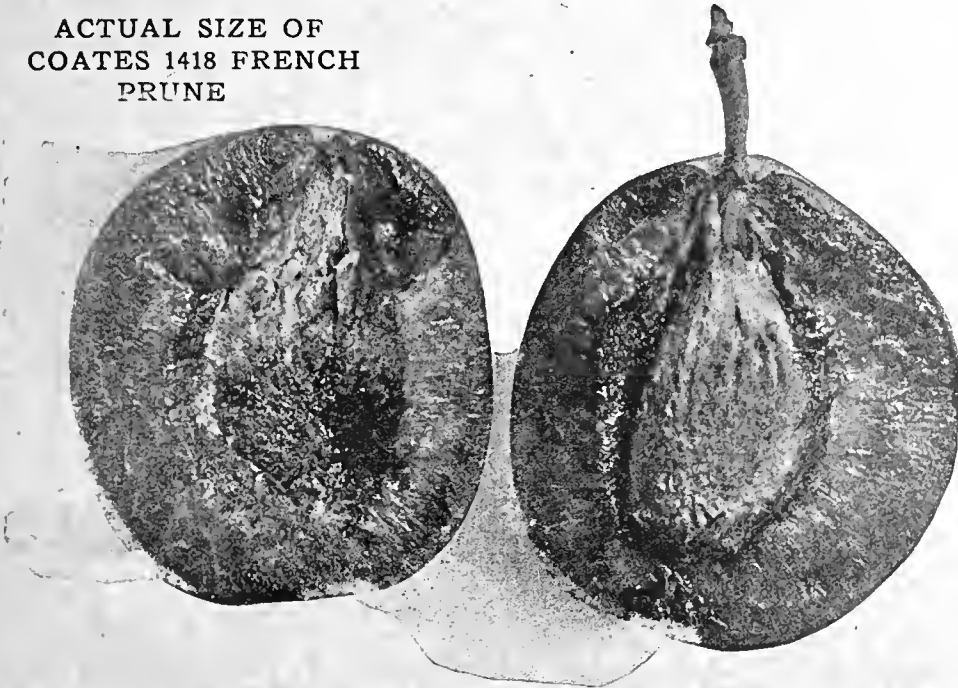
TRAGEDY. Early European variety. Fruit large, heart shaped, light straw color when ready for shipment, firm flesh. When ripe turns cherry red and flesh becomes juicy with delicious flavor.

WASHINGTON. Very large, roundish, greenish yellow sometimes with a pale crimson blush; flesh yellow, firm, sweet and luscious.

WICKSON. Very large; yellow with red flesh; nearly all red when ripe; round pointed; great bearer; fruit handsome and of good quality. One of the best of the Japanese type. August.

YELLOW EGG. A beautiful golden yellow color, large size with oval shape. Flesh firm, juicy and sweet when fully ripe. Tree strong grower and productive. Popular for both home orchards and commercial canning.

ACTUAL SIZE OF
COATES 1418 FRENCH
PRUNE



Coates "Super-Quality" PRUNES

A Prune of Merit and Commercial Importance

Coates 1418 French Prune

The one variety of many introductions endorsed by
Growers, Packers and Shippers

On Apricot, Peach, Almond and Myrobolan Roots.

COATES 1418. Without a doubt the greatest improvement in the French Prune for the past half century. Introduced about fifteen years ago as a superior variety of French Prune and its popularity has steadily been on the increase. Today hundreds of acres are planted to this popular variety as the growers have found it consistently runs to larger sizes. Trees are noted for their vigorous growth, strong resistance to sour sap and continuous heavy crops. It is now the leading Prune on the market.

BURTON. A late introduction from the Vacaville valley. Fruit of pronounced size, averaging 20-30 to the pound; skin a rich violet-purple; flesh a rich golden yellow, fine grained and sweetly acidulous; pit oval, flattened and somewhat ribbed. Tree a strong vigorous grower and regular bearer. Worthy of a place in every home orchard.

FRENCH IMPROVED. A distinct step in the improvement of the French prune varieties. Tree vigorous; enormous bearer of pear shaped fruit; pure French seedling and is everything the most careful planter of "ordinary" French Prunes can wish for. Carefully tested for many years.

IMPERIAL. One of the largest prunes of very good quality. Our Clairac Mammoth strain bears regularly in all sections and is undoubtedly different from some strains which are irregular bearers.

ROBE DE SARGEANT. A large roundish blue prune of very good quality; skin rather tender. Ripens a little ahead of the French Prune. Not a regular bearer.

STANDARD. Very large rich and well flavored. Fine for eating fresh or preserving, but not satisfactory for drying.

STUART. A large prune of good quality. Resembles the Imperial in appearance but bears regularly and dries well.

SUGAR. Liked by many growers because of its early and heavy crops. The fruit ripens ahead of French prunes and so prolongs the season.

QUINCES

One of the finest fruits for jellies and preserves. A valuable addition to any home garden.

PINEAPPLE. One of the late Luther Burbank's introductions. Fruit is large, clear yellow, and very tender.

WEST'S MAMMOTH. A leading variety. Fruit large and the tree is an exceptional bearer.

PUNICA (Pomegrante)

	1 to 5	5 to 50
3 to 4 ft. grade60	.45

WONDERFUL. The largest and best. Ripens early. Very juicy, fine flavor and highly colored.

PERSIMMONS

	1 to 5
4 to 6 ft. grade	\$1.25
3 to 4 ft. grade	1.00

HACHIYA. Best market variety. Long, conical, deep orange red, very large, almost seedless. Delicious when soft. This is a profitable fruit to grow commercially.

MEDLAR (Mespilus)

This fruit is grown to considerable extent in parts of Europe, but is very little known in this Country. Tree grows from 10 to 15 feet, bearing large white blossoms late in May. Foliage soft and luxuriant. Fruit remains hard until mellowed by frosts, after which it becomes brown and soft. Fruit is agreeable for eating from the hand particularly for those who enjoy fruit-acids; also fine for preserves.

Coates "Super-Quality" NUT BEARING TREES

There is probably no one division of fruit culture in California that has maintained itself on a more firm basis than the culture of nuts possessing commercial rank. Of these, the walnut easily occupies first place, closely followed by the almond. Our stock of almond and walnut trees is unusually fine in quality and covers the leading and most popular sorts for this section.

ALMONDS

On Peach and Almond Roots.

DRAKE'S SEEDLING. A regular and heavy bearer. Blooms late. Soft shell, medium size. Plant with Nonpareil for pollination.

I. X. L. Strong, upright grower, large leaves, large nuts, usually single kernels. A very desirable variety. Use Drake's to pollinize.

LONG I. X. L. An improvement of the I. X. L. as it is a more prolific bearer, with full kernel.

JORDAN. Famous Spanish variety. Nuts long with hard shells, kernels of superior flavor and plump. Tendency to bloom early makes it a rather shy bearer.

LEWELLING. Tree a great bearer, of drooping habit; nut large, with a fine flavor and hulls easily. Trees bear an abundant crop of beautiful Deep Pink Flowers and many people desire this variety just for the foliage and blossoms, as it is the most beautiful flowering tree of the fruiting type.

NONPAREIL. A very heavy and regular bearer of the paper shell type, ripens early, long thin nuts. This is usually the first choice of growers. Use Drake's Seedling for pollination. The tree has rather spreading or weeping style of growth; leaves smaller than I. X. L.

NE PLUS ULTRA. An old standby. Nuts are large and somewhat long and almost invariably of one kernel, which hull readily and are of good flavor. Tree upright in habit and a prolific producer of fruit all along the twigs.

PEERLESS. Large shapely nut, bright, smooth. A regular producer with heavy crops. An excellent pollenizer.

TEXAS PROLIFIC. Nut medium, shells perfectly and is well filled. Tree a good producer and valuable for planting with other varieties in aiding pollination; also a strong grower.

WALNUTS

The walnut tree is partial to a deep, rich loamy soil and is very sensitive to moisture conditions. The northern California Black Walnut root being hardy, trees grafted on it will do well.

The northern California Black Walnut root is very hardy, hence will grow practically anywhere. But when varieties of the Persian Walnut (often erroneously called English or French) are grown on it, care must be exercised in selecting variety suitable to prevailing local conditions.

BUDED WALNUTS

	1 to 10	11 to 50	51 up
6 to 8 ft.	1.75	1.50	1.25
4 to 6 ft.	1.50	1.25	1.00
3 to 4 ft.	1.25	1.00	.75
2 to 3 ft.	1.00	.75	.60

CONCORD. Nuts are of a light brown color and good size, short, and usually a little flattened at the blossoms end; shell thin, easily crushed; kernel full, solid and heavy with rich, sweet and nutty flavor. Tree a beautiful and symmetrical grower and heavy bearer with heavy, light-green foliage; decidedly ornamental.

EUREKA. Nut long and large; shell smooth, not over-thick; kernel cream-colored, medium plump and of good flavor. Tree robust, clean branches and open top; a splendid bearer.

FRANQUETTE. Nuts long and pointed; flavor sweet and rich; kernel full-fleshed; shell strong and rich brown in color, and do not crack during the chlorine bleaching process. Tree a very late bloomer, upright in growth, and symmetrical. Desirable for regions where late frosts are expected.

MAUTNER. (Blackmer). A variety which is proving very satisfactory in many parts of the State. Nuts are large and long, resembling the Eureka in shape. Shell is very light colored and quite smooth. Nuts are well filled and rich in flavor. Tree is a good grower and consistently bears heavy crops.

PAYNE'S SEEDLING. A local introduction of real merit and high commercial rank. Nuts large; kernel full and meaty; flavor of the best; will not crack when chlorine-processed. Tree is very precocious and an immense bearer. Especially recommended for deep, moist soils, or locations where ample irrigation is available. Popular with planters throughout this region.

SAN JOSE MAYETTE. (True Wiltz Strain). A new introduction. Nut large, very blunt and sometimes flattened at apex; shell smooth, a bright straw in color, rendering it very attractive; kernel full, solid and of good flavor. The nuts ripen early, hulls opening freely, but are inclined to crack during bleedings; by selling direct from trees, however, good prices are realized. Tree of vigorous spreading habit; uniformly productive and better suited to dry locations than any other walnut we know of.

BLACK WALNUT SEEDLING

Northern California Black Walnut Seedlings grown on the best soil and machine dug, insuring a good root system.

This root should be planted where Oak Fungus may be in the ground.

CHESTNUTS

ITALIAN CHESTNUT. Nuts of medium size, good quality which hull readily. Trees are strong growers and also used for ornamental purposes.

4 to 6 ft. grade	\$1.00
------------------------	--------

GRAPEVINES

Our Grape Vines are grown in Kern County, a Pyhloxera free district, and do not have to be dipped.

TABLE AND RAISIN VARIETIES

No. 1 grade	1 to 10 .15	11 to 50 .10
-------------------	----------------	-----------------

BLACK HAMBURG. Known as one of the finest table grapes producing large bunches of coal-black, round berries, with a sweet juicy flavor. An ideal grape for the home and local markets.

BLACK MONUKKA. An excellent eating black seedless grape, also used extensively for fancy raisins. Berries medium size, elongated with tender crisp skin, very sweet flesh.

BLACK MUSCAT. Considered to have the richest, finest flavor of any grape, even exceeding the famous white Muscat. Ripens about three weeks ahead of the Muscat, and is without a doubt the most delicious grape on the market.

BLACK PRINCE. (Rose of Peru). Large round black berries borne on large compact bunches; vigorous grower and excellent producer, a fine eating grape and popular variety for the arbor.

MALAGA. Ripens early, with large oval white berries borne in large loose clusters; flesh sweet, crisp and delicious. Considered one of the best white varieties and a good shipper.

MARAVILLE de MALAGA. (Red Malaga). A wonderful red grape for market and shipping, as well as being unexcelled for home use. Extremely large berries, round, and bright red, with a sweet rich flesh. The best all around red grape.

MUSCAT. California's favorite white grape. Large oval green berries with a most delicious flavor that is not excelled by any other grape; without a doubt this is the most popular table variety; it is also used extensively for seeded raisins and makes the famous Muscatel Wine.

OLIVETTE BLANCHE. A very fine shipping and table grape. Large, long amber berries with an exceedingly rich flavor. A heavy producer with large bunches, and keeps well.

RIBIER. Immense round, handsome black berries with firm, juicy sweet flesh. Its good shipping qualities makes this one of the most popular grapes for home and market uses.

THOMPSON SEEDLESS. This famous white grape is so well known that it needs no introduction. Valuable as a shipping and raisin grape. Its vigorous growth and seedless berries make it a favorite for the home garden.

HARDY AMERICAN (OR EASTERN) GRAPES

The "Slipskin" type of grape which is very hardy and extensively grown in Eastern and Middle Western States of which the famous "Concord" is a typical example. All are suitable for arbor and trellis and do well on the Pacific Coast.

No. 1 grade	1 to 10 .20	11 to 50 .15
-------------------	----------------	-----------------

CONCORD. The most widely known and extensively planted of the American varieties; its medium size bunches with blue-black berries is known to have the finest flavor of any of the "Slipskin" varieties; and it is unexcelled for grape juice and jelly.

CATAWBA. The best of the red American grapes. Medium large, round berries with a rich vinous flavor, grown on large loose bunches.

ISABELLE. A fine arbor grape with glossy black berries and large leaves, and a musky flavor which many people prefer to any other variety.

NIAGARA. The best white American variety and holds the same popularity among the white grapes as the Concord does with the black varieties. Berries large, pale-yellow, very sweet, tender and juicy.

PIERCE. This is another American variety with a slight musky taste; large blue berries showy and aromatic; flesh sweet and juicy.

WINE GRAPES

No. 1 grade	1 to 10 .15	11 to 50 .10
-------------------	----------------	-----------------

ALICANTE BOUSCHET (Black). Large round red berries of medium size; planted extensively for its red juice.

GOLDEN CHASSELAS (White). Owing to its adaptability to all districts it is used extensively for its juice which makes the Sherry type.

MISSION (Black). Round, sweet, medium size black berries produced in enormous bunches; this is one of the old wine grapes brought in from Spain by the Padres and has been popular ever since. Makes a fair table variety and an excellent quality of Angelica wine.

ZINFANDEL (Black). No doubt the leading wine variety of California. Berries rather small, round, thin skin and juicy, borne in compact clusters which produce an enormous crop. The most dependable for juice purposes.

BERRY PLANTS

BLACKBERRIES

Price Each 1 to 10 11 to 50
15 .12½

CORY'S THORNLESS. This well known Thornless Blackberry needs no introduction to the planting public; fruit is large, sweet, with small seeds, and jet black in color.

MAMMOTH. A very rapid grower with trailing habit. Berries are very similar to Cory's Thornless, but vine is thorny and a very heavy producer.

HIMALAYA. This variety is also a rampant grower and a prolific producer over a long period of time, as the berries continue to ripen after the Boysenberries and Youngberries are thru. Berries are of medium size, of excellent quality and juicy.

YOUNGBERRY

Price Each 1 to 10 11 to 50
15 .12½

Although a comparatively new berry it has attained a remarkable popularity. Berries are large and firm with a deep wine color changing to dark black with age and have an exquisite piquant flavor and are splendid for making jellies and jams. Vines are heavy producers and very vigorous and to obtain best results should be on wire trellises.

LOGANBERRY

Price Each 1 to 10 11 to 50
15 .12½

This variety has long been a favorite on the Pacific Coast. The enormous crops of large, dark red berries are famous for their excellent jams, jellies and preserves.

CURRANTS

Price Each 1 to 10
20

CHERRY. One of the best varieties for all around purpose as this variety can be used for either home or market. Berries red, borne in immense clusters.

GOOSEBERRY

Price Each 1 to 10
20

OREGON CHAMPION. Without a doubt one of the finest varieties of Gooseberries; fruit medium to large, round, sweet and juicy.

BOYSENBERRY

Price Each 1 to 10 11 to 50 51 to 100
20 .15 .12½

This new berry has proven a sensation and justly so due to its many desirable features, one of which is its adaptability to a wide range of climatic conditions. The large vigorous vines produce an enormous crop which ripens earlier than that of the Youngberry and continues to fruit two weeks after Youngberries are gone.

The Boysenberry is the largest of all berries, with higher flavor and less seeds than either the Loganberry or Youngberry; berries are jet black with a sweet mellow flavor.

RASPBERRIES

Price Each 1 to 10 11 to 50
10 .08

CUTHBERT. Fruit is deep red, heavy bearer and of excellent quality. Considered one of the best for the home garden.

LA FRANCE. The berries are large, rich and juicy. A very heavy bearer. Excellent for home garden use.

LLOYD GEORGE. The largest red Raspberry grown, recently introduced from England. Fruit is of the highest quality and borne in immense clusters. Flesh is very juicy with small seeds. For home use and local markets it cannot be excelled, but too soft to be a good long distance shipper.

LATHAM. This is a new variety that is becoming very popular in the West. It is larger than the other Raspberries with a very fine flavor—not as heavy a producer as some varieties but this is offset by its fine quality of fruit.

STRAWBERRIES

Price Each 1 to 50 51 to 500 500 up
03 .02½ .02

BANNER. (Also known as "New Oregon" and "Oregon Plum"). There is no doubt that from the standpoint of "Quality" this is the finest berry grown in California. This variety is particularly adapted to Northern and Central California. We consider it one of the very best varieties for home garden use. The berry is a rich deep red color, sweet, large and firm, and produces well over a long season.

CITRUS AND SUB-TROPICAL FRUITS

ORANGES

Price Each 1 to 10 11 to 50
 2.50 2.00

WASHINGTON NAVEL. The most popular variety on the market and responsible for California's world wide citrus fame. The fruit is large, with a flavor that is not equaled by any other Orange. The skin peels off readily and the sections are easily separated.

VALENCIA LATE. Fruit ripens during summer and fall months after Washington Navels are gone. Fruit is medium size, sweet and juicy, with few seeds.

LEMONS

Price Each 1 to 10 11 to 50
 2.50 2.00

EUREKA. The leading commercial variety and best for the home planting. Fruit is uniform, medium size, few seeds, very juicy, and without a doubt the best quality of all the varieties. Tree is nearly thornless and a very prolific bearer.

LIMES

Price Each 3.50

BEARS SEEDLESS. This is the ranking variety bearing the largest and finest fruit, which is very juicy and matures all year around.

POMELO (Grapefruit)

Price Each 1 to 10 11 to 50
 2.50 2.00

MARSH SEEDLESS. Practically all commercial planting of Grapefruit in California is of this variety. Fruit is practically seedless, large, juicy, with a thin rind, with a most delicious flavor.

TANGERINES

Price Each 3.00

SATSUMA. The hardiest of the Citrus variety, also the earliest Tangerine to ripen. Tree is a dwarf grower and the fruits are sweet, large, loose-skinned and juicy. Foliage a deep rich green.

ERIOBOTRYA (Loquat)

Price Each 1.75

CHAMPAGNE. This budded variety is a splendid fruit, and one of the earliest of the Spring fruits. One of the finest fruits for jellies and dessert purposes. Flesh white, with a fine flavor.

AVOCADO (Alligator Pears)

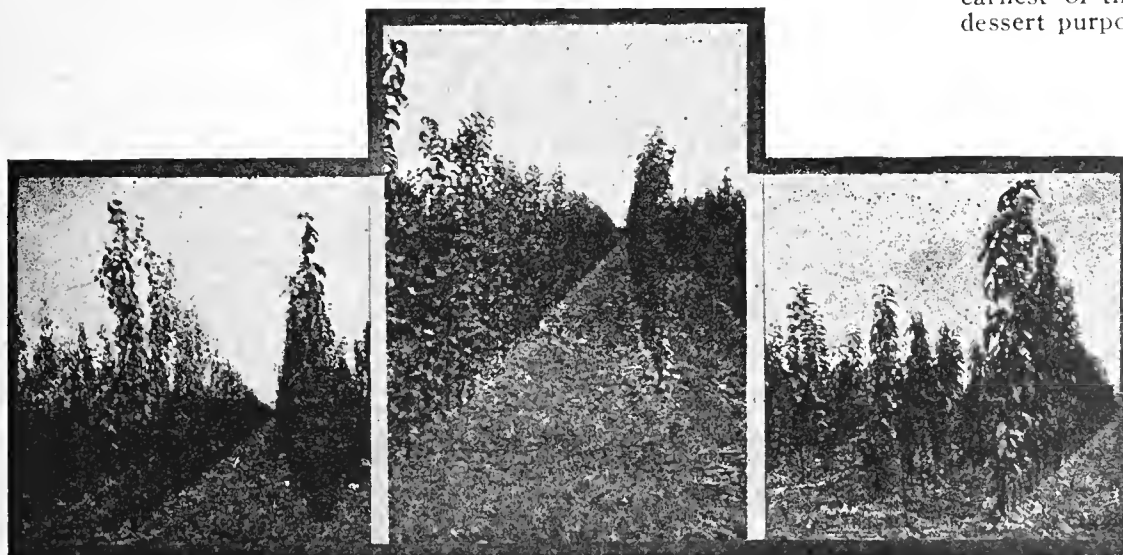
Price Each 4.00

NOTE:—The three varieties listed below are more suitable for Central California as they are considered the more hardy type.

DUKE. Fruit thin skinned, green color, oval shape. Tree produces large fruit weighing from 8 to 12 ounces.

FUERTE. One of the outstanding commercial varieties. Fruits oblong, dull green in color. Spring and Winter bearing.

PUEBLA. The largest and finest of the Mexican thin skinned Avocados, not quite as hardy as the two varieties listed above. Fruit deep maroon purple in color; flesh yellow buttery, rich and fine.



THREE VIEWS OF "FRUIT TREES" AT OUR BRENTWOOD NURSERY. LEFT TO RIGHT THEY ARE PRUNES, PEARS AND CHERRIES

Coates "Super-Quality" Fruit Trees

A guarantee of satisfaction. Authorities on
Fruit Tree Culture for over Half a Century

Established 1878

LEONARD COATES NURSERIES
INCORPORATED

P. O. Box 231

SAN JOSE, CALIFORNIA

Telephone, Santa Clara 600

MAIN OFFICE AND SALESYARD — 2201-2205 THE ALAMEDA — SAN JOSE, CALIFORNIA
Nurseries and Salesyards also at MORGAN HILL, SANTA CRUZ, BRENTWOOD and 3121 Fruitvale Avenue, OAKLAND

Ray D. Hartman, Pres. and Mgr.

California Native Trees and Shrubs

California has, without a doubt, the largest and most interesting assortment of "NATIVE PLANTS" in this Country.

Over thirty years ago we became interested in the propagation of "California Natives" realizing that in years to come they would play an important part in the beautification of California Homes.

Today we have the finest and largest nursery-grown collection in the West.

Here are some of the reasons "Natives" have become so popular:

Many can be planted in hot, dry places and require very little care after the first year.

Gorgeous Clustered Berried Plants.

Flowering Shrubs that have Grace and Beauty.

Foliage Plants—for mass effects in Hedges, Backgrounds and Foundation Planting, which give year 'round Beauty.

Evergreen Conifers—dark green with their luxuriant foliage, and the Giant Sequoias.

Deciduous Trees and Shrubs that burst forth in all their beauty in the Spring and Summer months.
